



Refined Rentals.





Welcome to St. Thomas

The city, located at the intersection of two historical roads, was first settled in 1810. It was named the seat of the new Elgin County in 1844 and was incorporated as a village in 1852, then as a town in 1861.



HISTORY

NATURE

AMENITIES



Proximity to anything you need.

5 Min

walk to VA Barrie Park

5 Min

To Elgin General Hospital

15 Min

Drive to Port Stanley



Parks

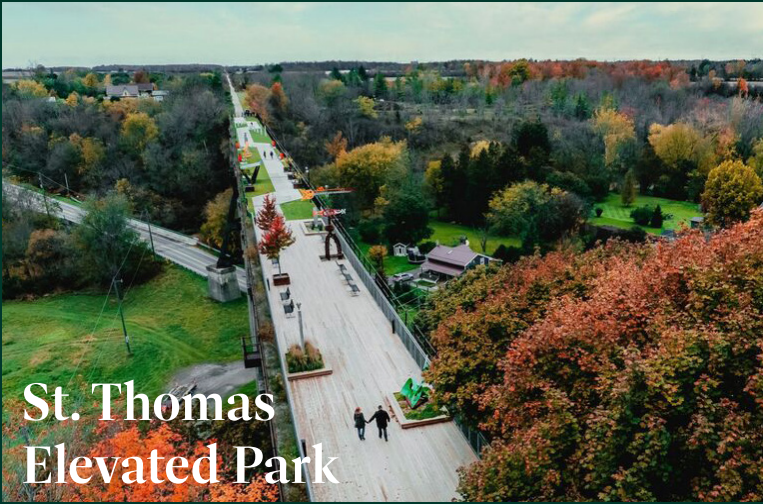
7+ Parks and Conservation

Shops

Amazing Shopping Centre

Amenities

No shortage of activities



**St. Thomas
Elevated Park**



VA Barrie Park

Explore *St. Thomas* **Parks & Nature**

- ▷ VA Barrie Park
- ▷ St. Thomas Elevated Park
- ▷ Waterworks Park
- ▷ Pinafore Park
- ▷ Dalewood Conservation
- ▷ Dan Patterson Conservation
- + Many More



Nestled within the historical
COURTHOUSE DISTRICT

An inspiring and relaxed neighbourhood that oozes history and knows what it's all about. One of the oldest neighbourhoods in St. Thomas, **the Courthouse Neighbourhood** is beautiful all times of year, but especially in

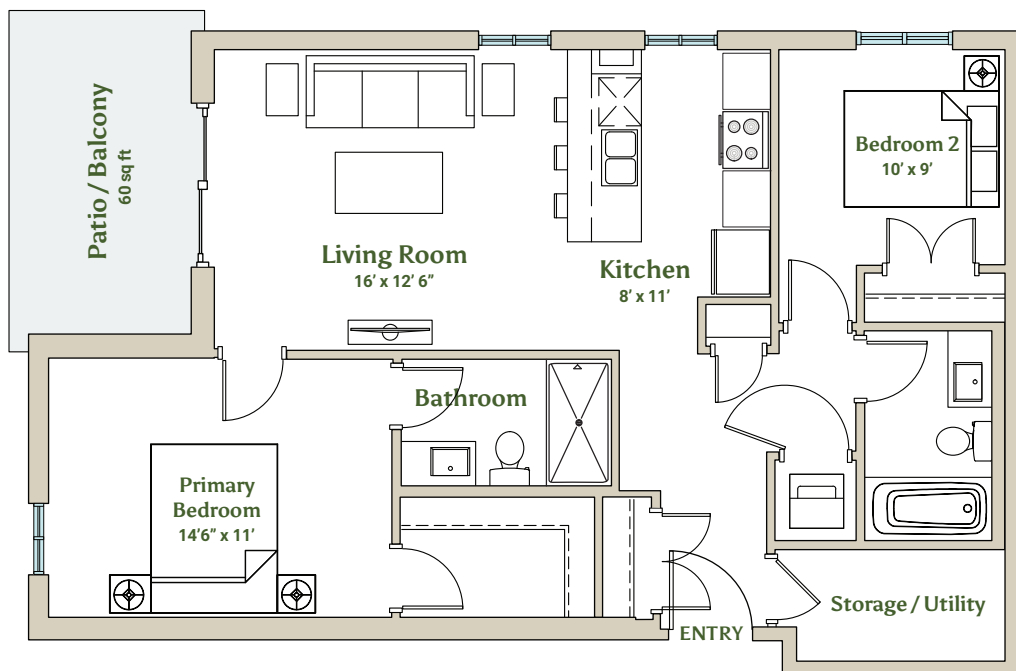
Spring when the magnolia trees that dot the neighbourhood are in bloom. Friendly people with a strong sense of community live here, and the pride they take in their history of this area is evident.



59 Walnut Street



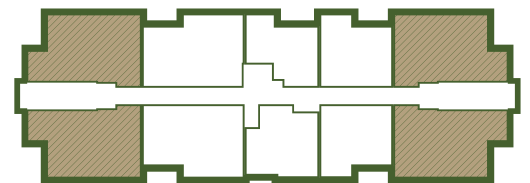
St. Thomas, ON



Floor 1-3

Barrie

2 Bedroom | 2 Bath | 975 sq ft

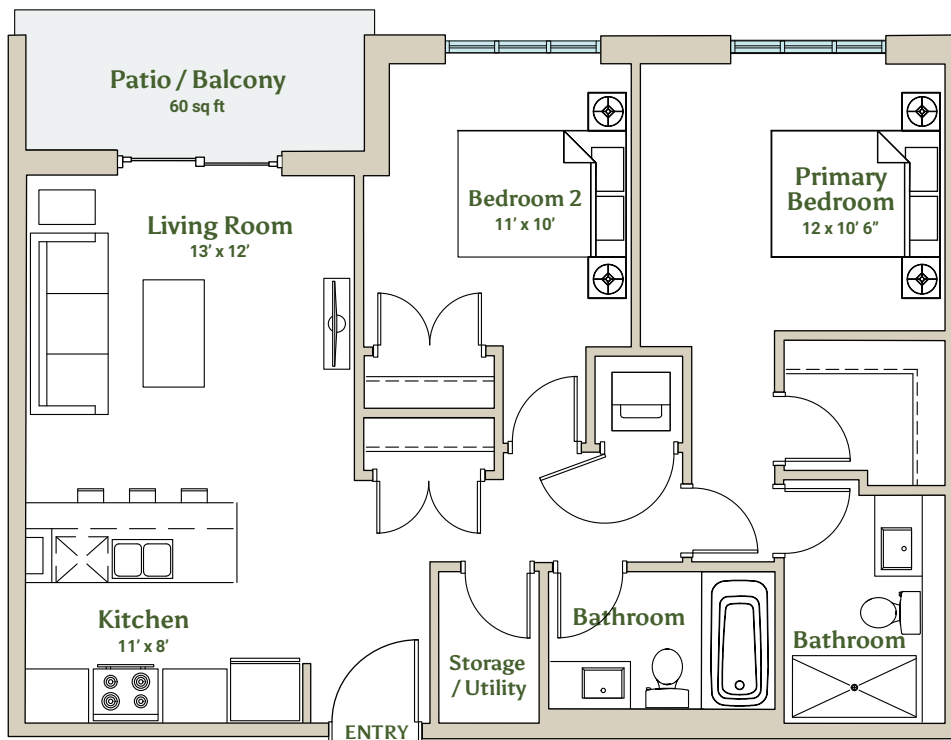


Refined Rentals

59 Walnut Street



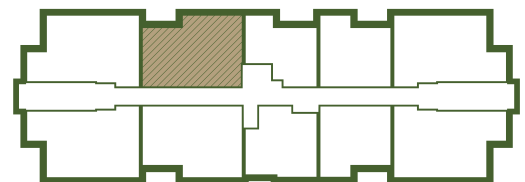
St. Thomas, ON



Stanley

2 Bedroom | 2 Bath | 910 sq ft

Floors 1-3

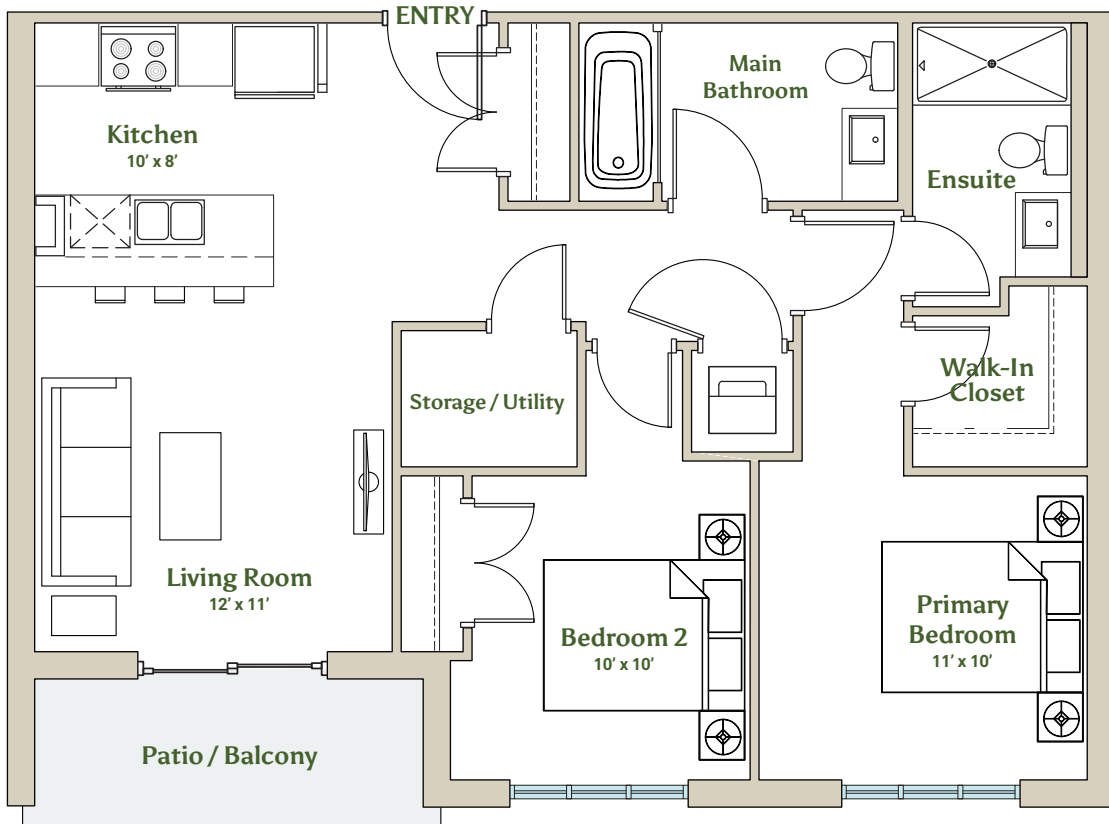


Refined Rentals

59 Walnut Street



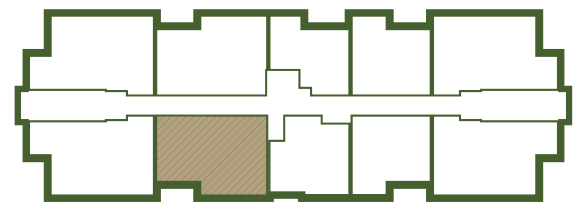
St. Thomas, ON



Floors 1-3

Stanley 2

2 Bedroom | 2 Bath | 910 sq ft

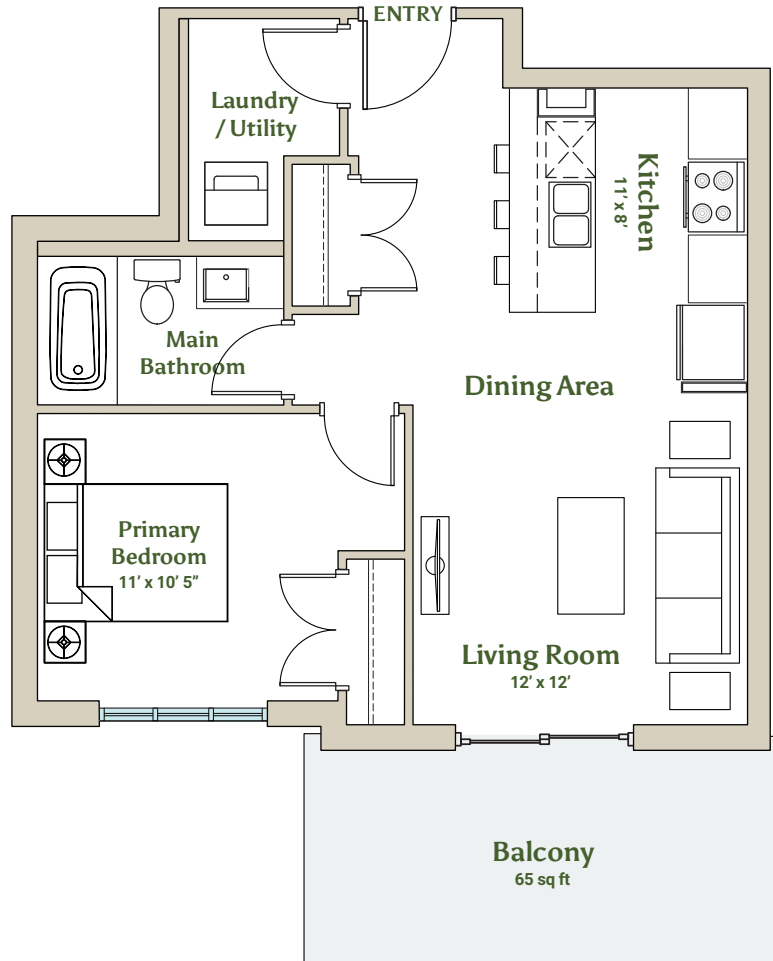


Refined Rentals

59 Walnut Street



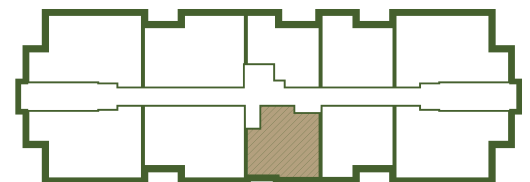
St. Thomas, ON



Floor 1

St Anne

1 Bedroom | 1 Bath | 650 sq ft

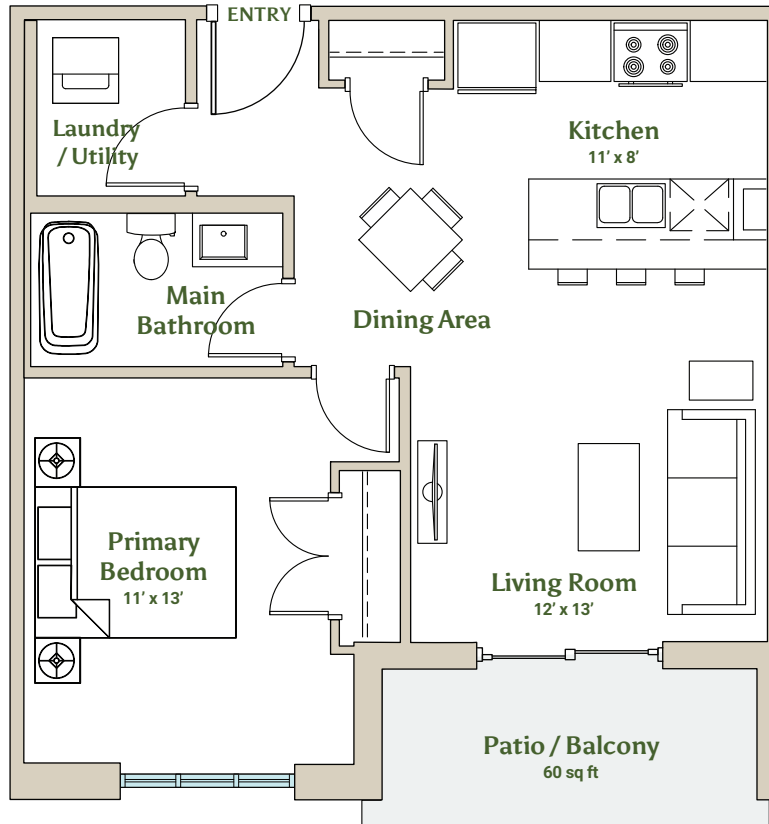


Refined Rentals

59 Walnut Street



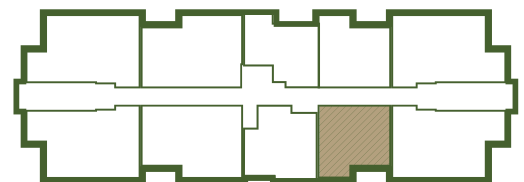
St. Thomas, ON



Metcalfe

1 Bedroom | 1 Bath | 640 sq ft

Floors 1-3

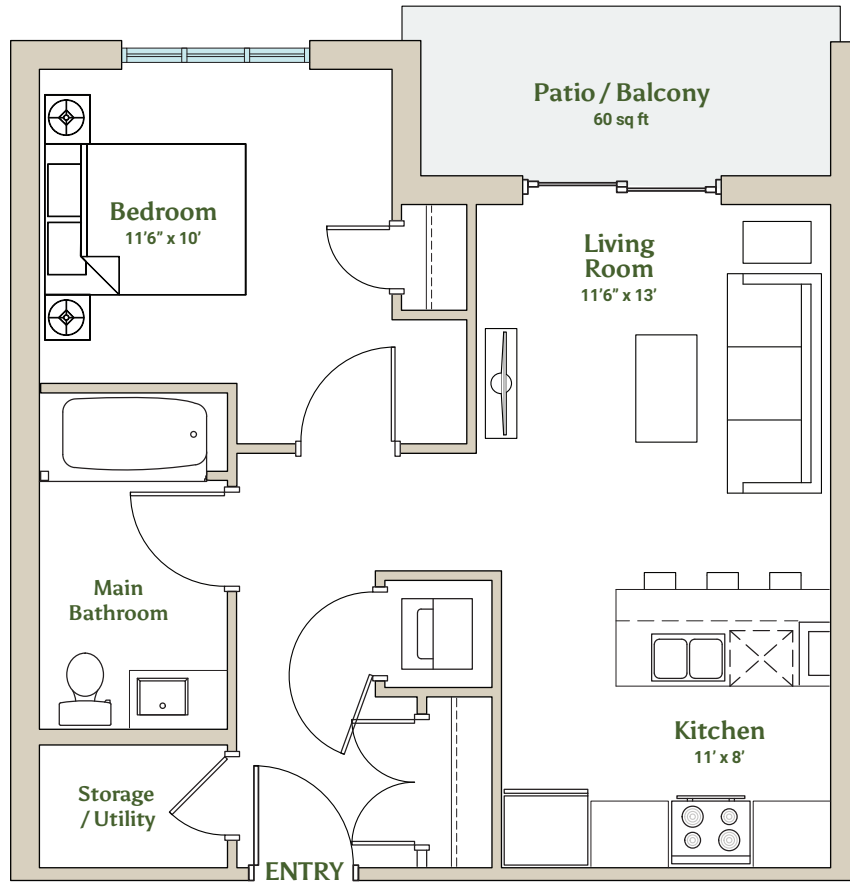


Refined Rentals

59 Walnut Street



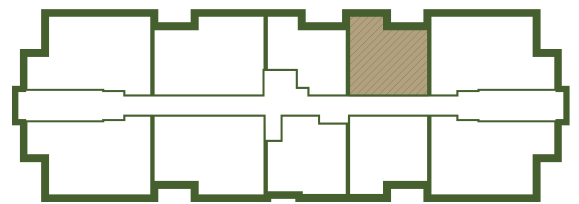
St. Thomas, ON



Floors 1-3

Metcalfe 2

1 Bedroom | 1 Bath | 640 sq ft

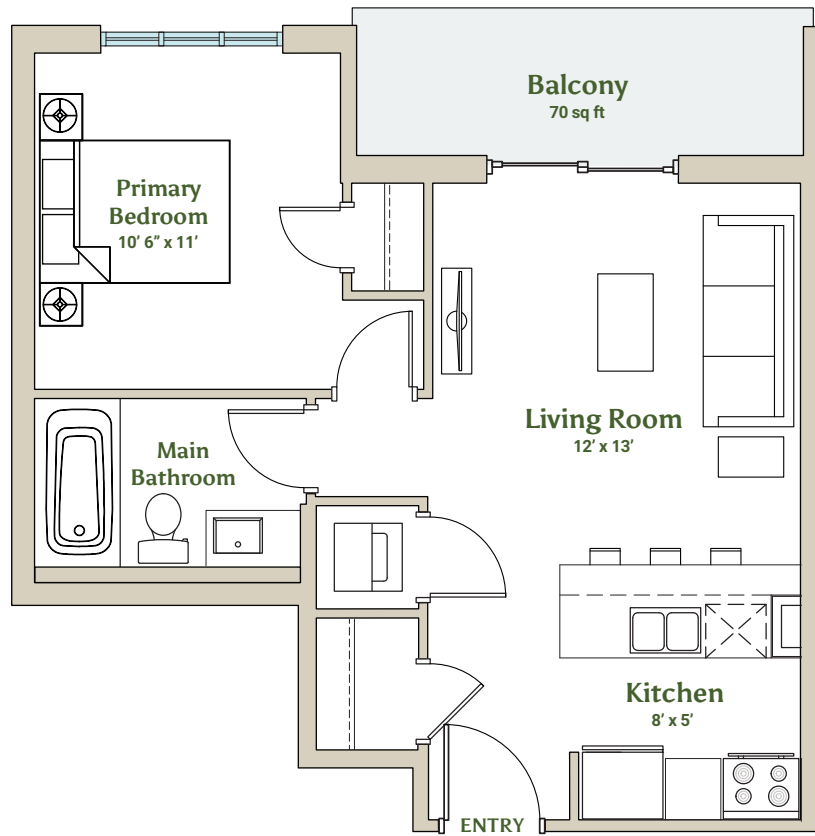


Refined Rentals

59 Walnut Street



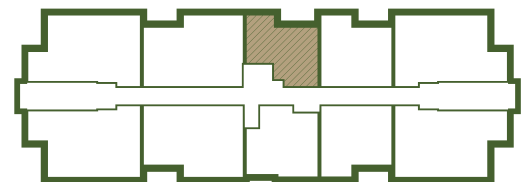
St. Thomas, ON



Floor 1

Gladstone

1 Bedroom | 1 Bath | 565 sq ft



Refined Rentals



Building Features

- Elevator
- Secured Entrance
- Video monitored
- Designated Outdoor parking
- Large park on site with outdoor gardens and gazebo
- Garbage chutes on each floor connected to main floor garbage room
- Main floor recycling centre
- On site guest parking
- Future Amenity spaces in historical Barrie Estate mansion
- Separate meters for hydro & water for direct billing to tenants

Unit Features

- Tasteful interior selections in a neutral colour palate
- Spacious kitchens with oversized islands
- Quartz counters throughout
- Full size stainless steel appliances
- In-suite front load washer, dryer & storage area
- 9' ceilings
- Main floor units have patios with fenced in courtyards
- Floors 2-3 have Private Balconies
- Luxury vinyl plank flooring throughout living areas
- Ceramic tile floors in wet areas
- Blinds provided for all windows including blackout for bedrooms
- Pot lights throughout with fixtures in bedrooms



THE DOMUS ADVANTAGE

Based in Southwestern Ontario, Domus Developments specializes in unique, award-winning single- and multi-family residence. The excellence of our designs, materials and sites make the difference - excellence that has earned us countless accolades, including two provincial honours and multiple “Project of the Year” awards and nominations.

Domus manages only our own rental properties with a full suite of staff for any rental needs for our tenants.





