

Uptown Living in the Village

Upper Richmond Towns promises to be a vibrant community within the exciting Upper Richmond Village neighbourhood; a community where you can Shop, Live, and Play. The Marketplace will include main-street shops, restaurants, a grocery store and a pharmacy located within walking distance of your new home.

Domus Developments builds on its reputation for exceptionally designed residential spaces, with this new collection of stylish 2-storey townhomes. This intimate collection sets the standard for condominium luxury where classic architecture integrates itself beautifully with manicured landscaping, all in an idyllic setting minutes from the Village.

Catch up with friends at a sidewalk terrace or find your way through the shops along the Village's commercial district or navigate through the network of pathways and parks - with so much to see and do Upper Richmond Village is the perfect choice for young professionals, families and empty nesters.



Legend

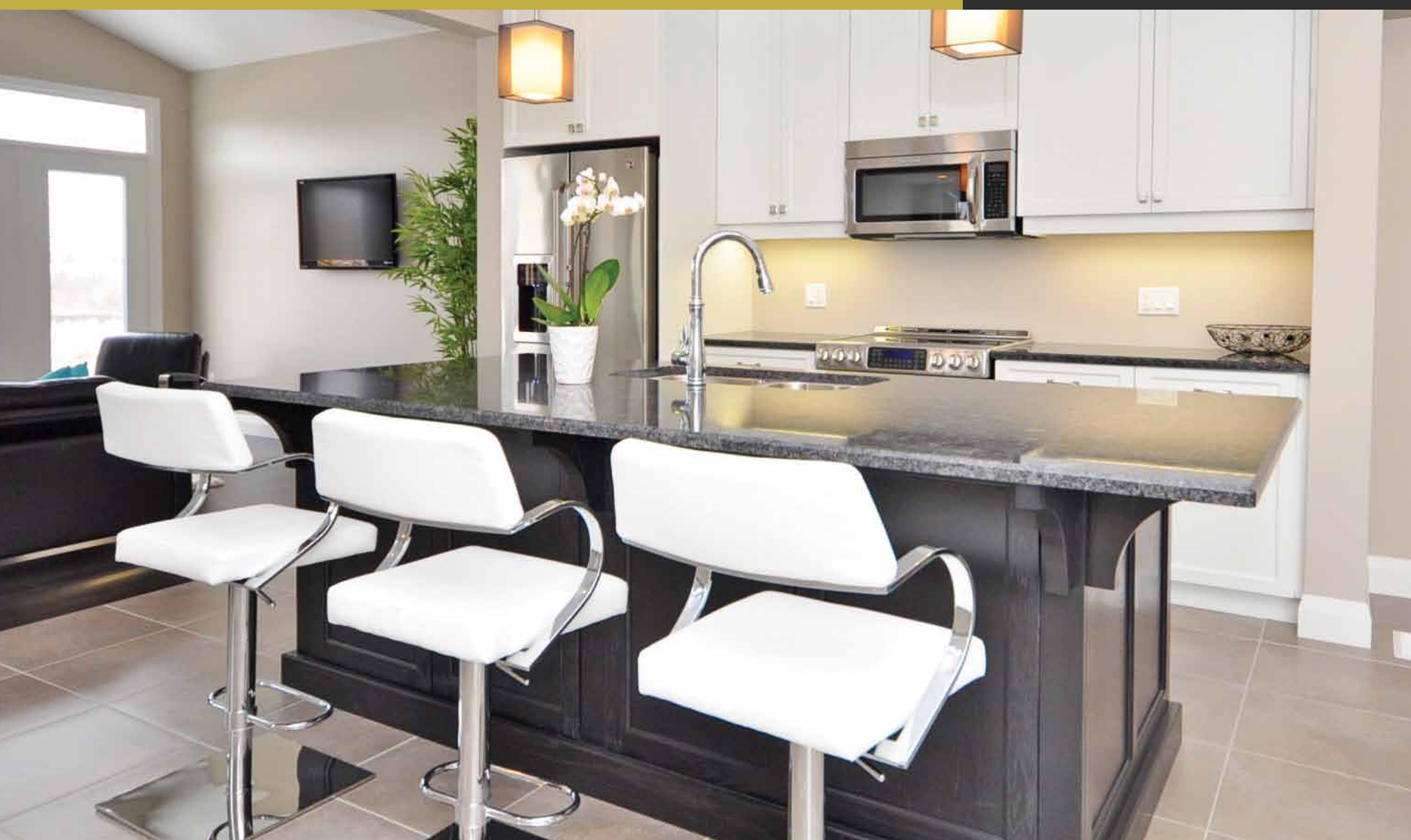
SOLD OUT

PHASE I

PHASE II

STACK UNITS

Site plan is artist's concept. Lot dimensions are approximate and depend on final survey. Landscape areas and plantings are concepts only and may vary from finished landscape. See sales representative for more information. E. & S.O. E.



Rendering is artist's concept of the completed building and is subject to change. Illustration may show optional features which may not be included in the lease price. Landscape areas and plantings are concepts only and may vary from finished landscape. See sales representative for more information. E. & S.O. E.

UPPER RICHMOND TOWNS

UPTOWN LIVING IN THE VILLAGE



 Domus Developments

Domus Developments specializes in unique, award-winning multi-family residences, as well as specialty commercial projects. Through innovative designs, desirable sites and a commitment to the highest-quality construction and standards and exemplary customer service, Domus has achieved an enviable reputation for creating functional and beautiful places to live, work and play. Domus continues to make their mark on the industry having been honoured with an Urban Design Award for their recent multi-family project.

Standard Towns

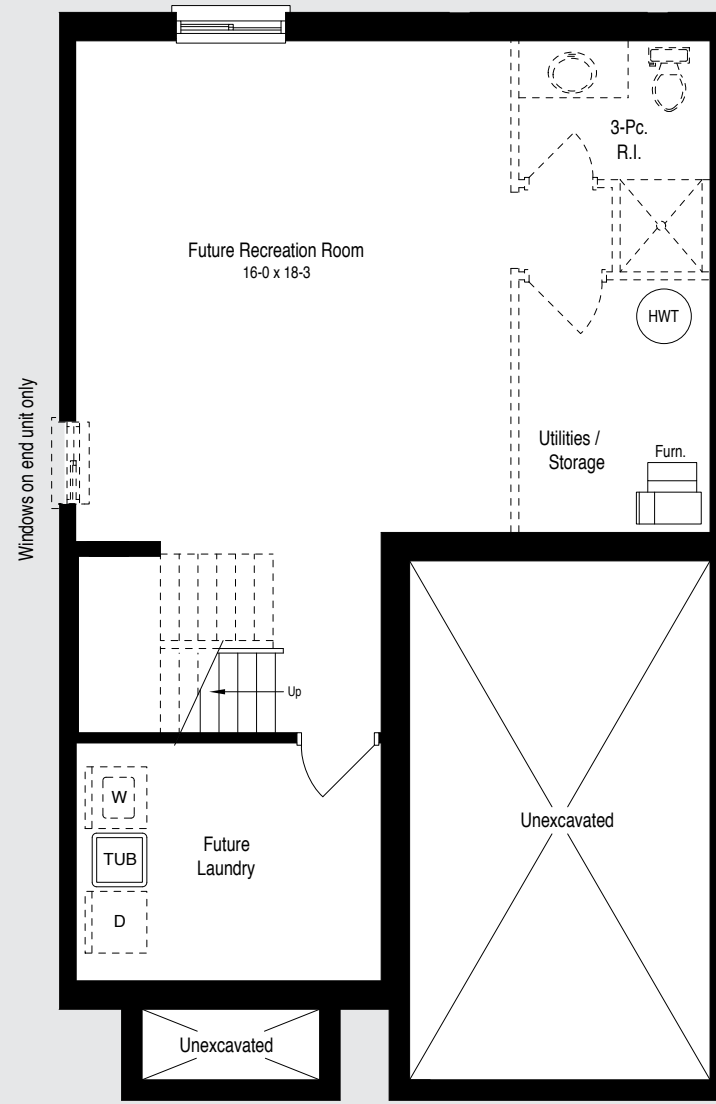
End Unit: 1668 sq. ft. Unfinished Loft: 465 sq. ft.
 Interior Unit: 1616 sq. ft. Unfinished Loft: 452 sq. ft.



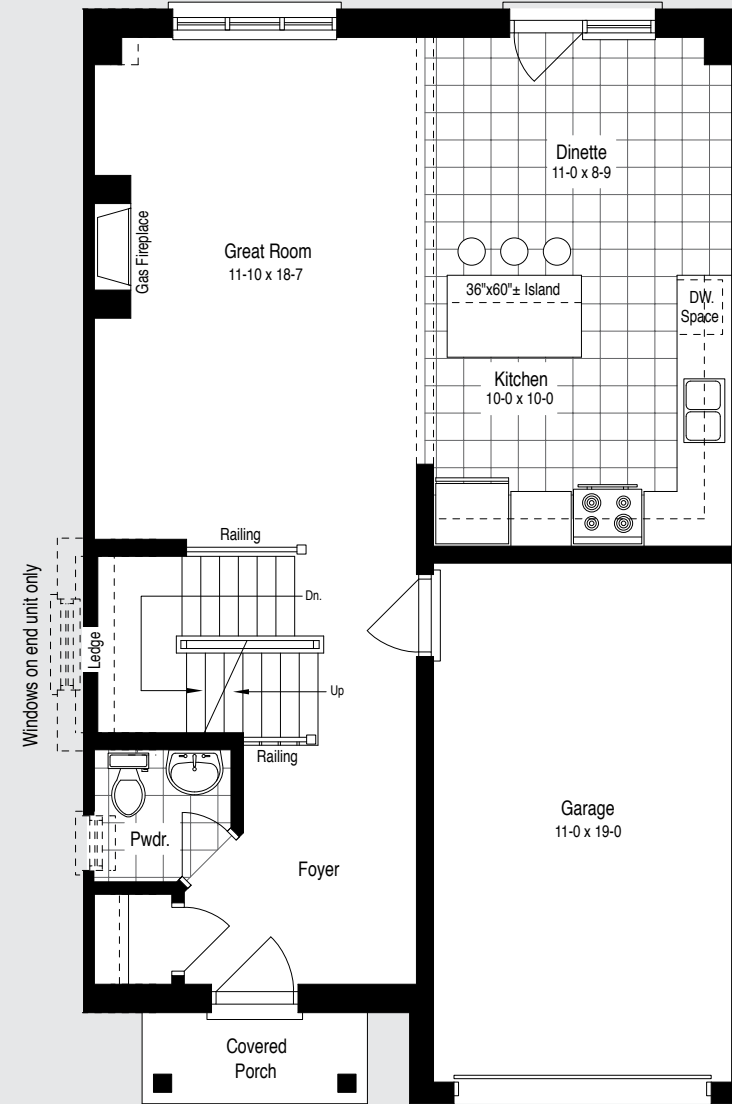
End Units



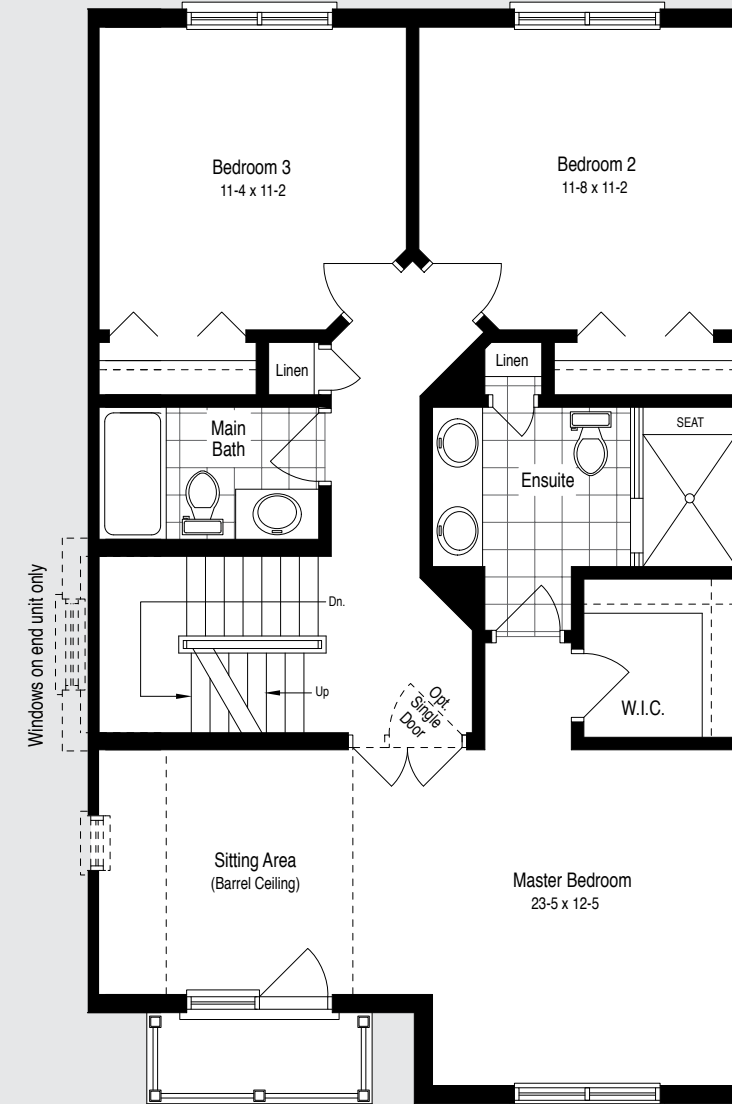
Interior Units



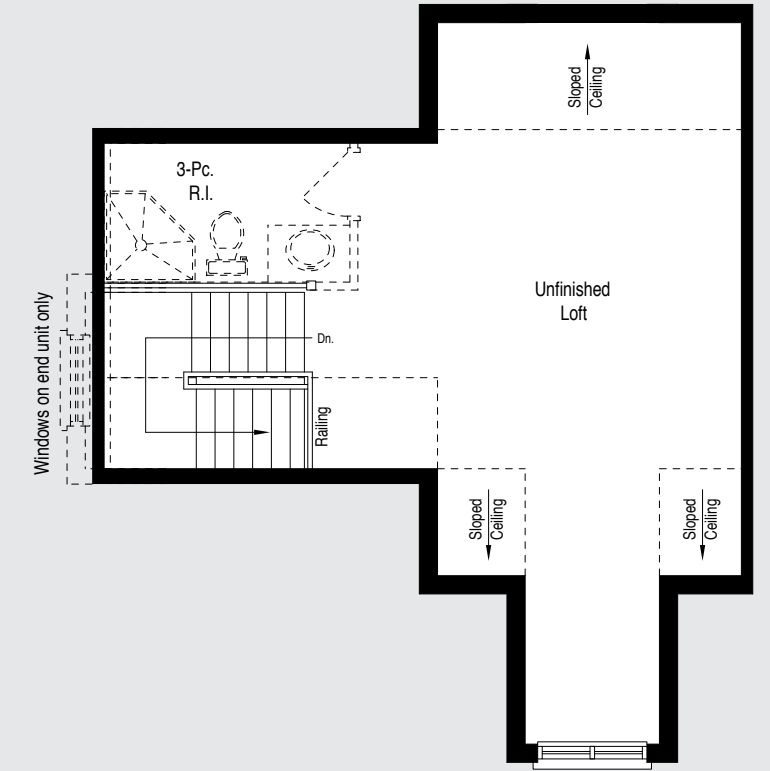
Basement



Main Floor



Second Floor



Loft

Rear Garage Towns

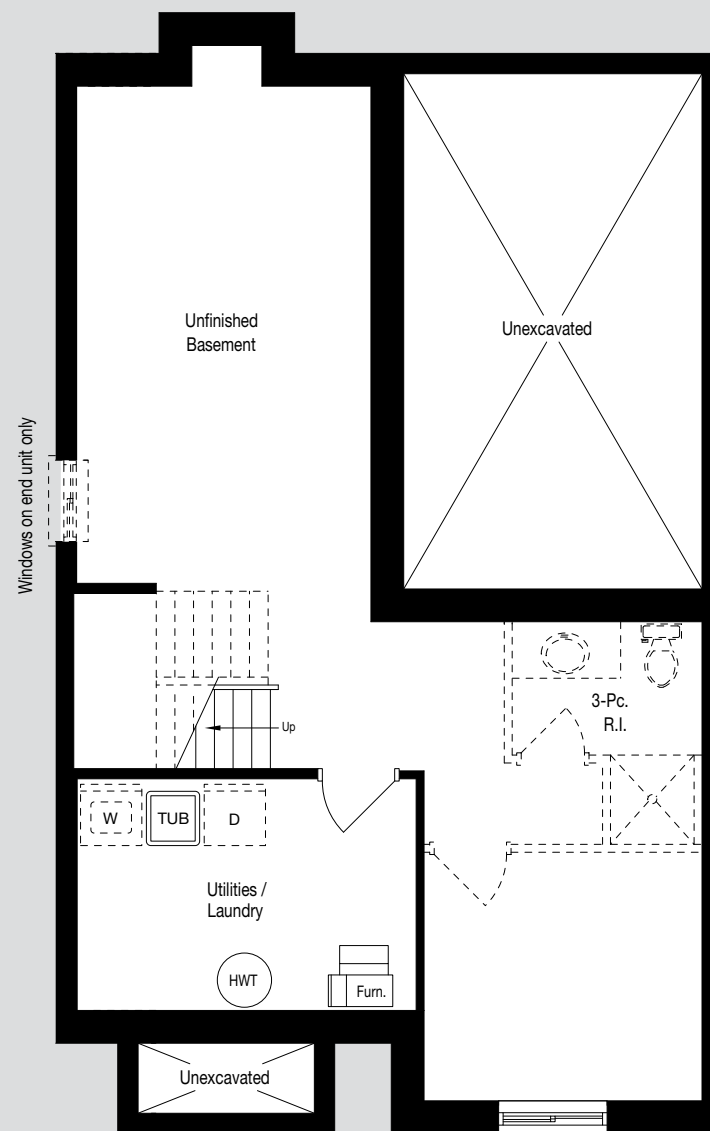
End Unit: 1651 sq. ft. Unfinished Loft: 505 sq. ft.
 Interior Unit: 1611 sq. ft. Unfinished Loft: 492 sq. ft.



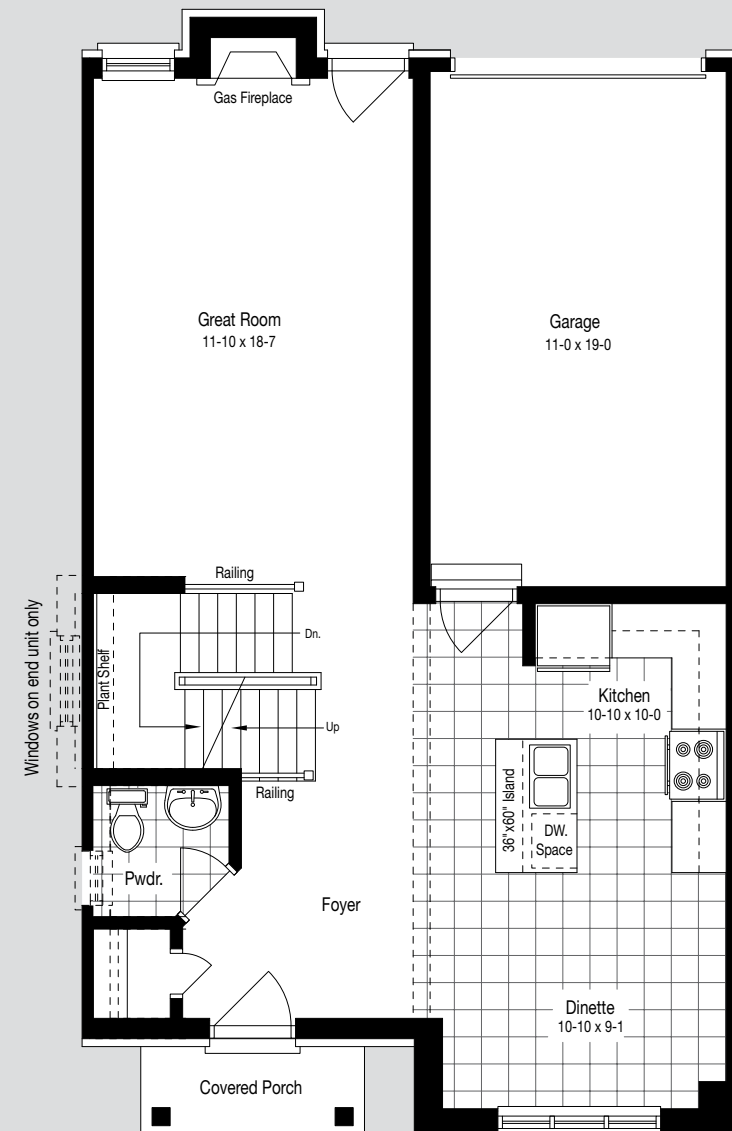
End Units



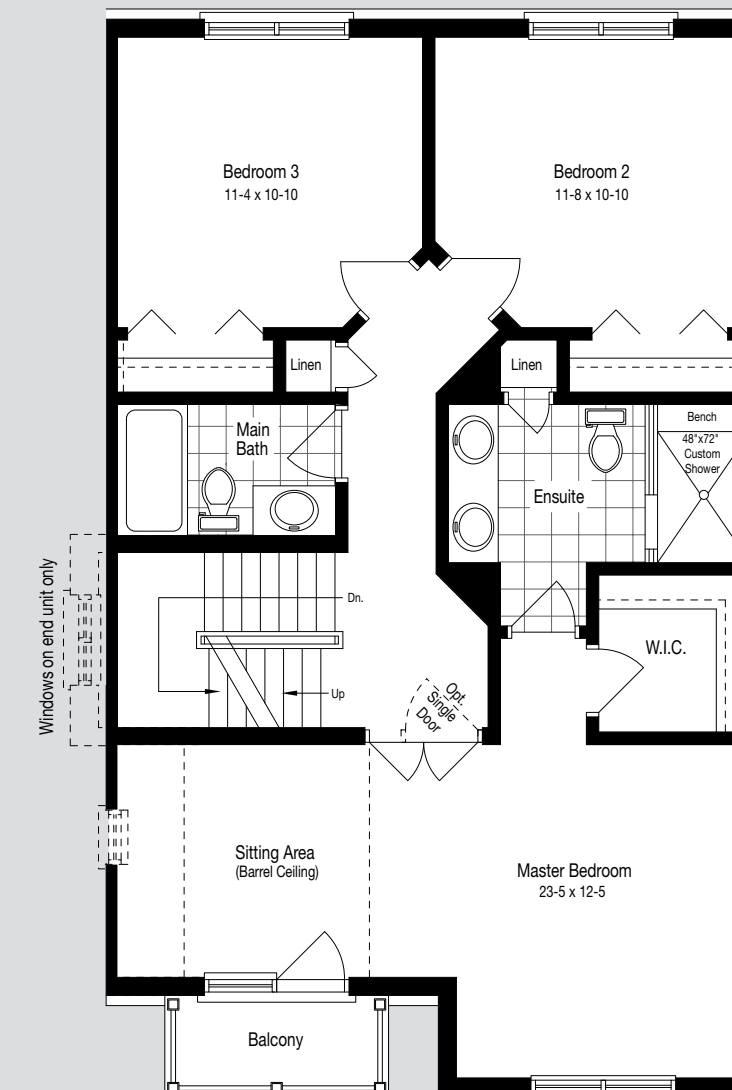
Interior Units



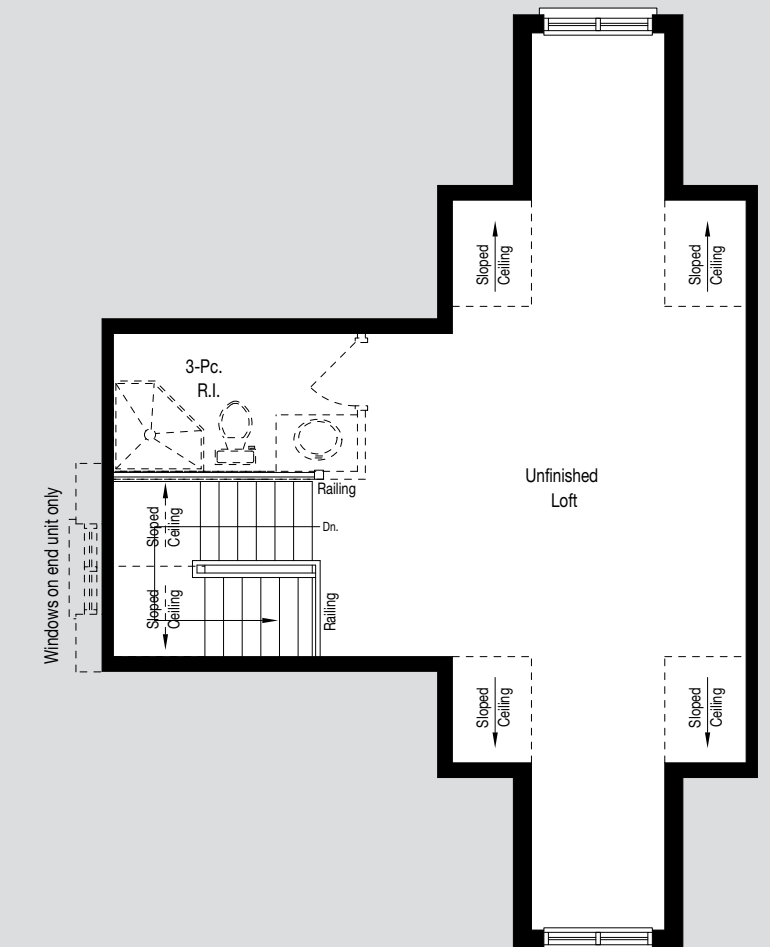
Basement



Main Floor



Second Floor



Loft

Plans and specifications are subject to change without notice. Actual usable floor space may vary from stated floor area. Illustrations are artist's concept only and may show optional features not included in base price. See sales representative for further information. E. & O. E.